

Company Profile



**Auto Commercial International
GTD FZCO**



AUTOMOTIVE SOLUTIONS FOR ALL INDUSTRIES

Automotive Spare Parts & Accessories

- Genuine OEM
- After Market
- 4x4 Vehicles
- Civilian Vehicles

Armoured Vehicle Components

- Intercoms & Electronics
- Bullet Resistance Glass
- Run Flats
- Mobility Solutions
- High Performance Materials
- Accessories

Architectural solutions

- Intercoms & Electronics
- High Performance Glass

Logistic Solutions

SERVICE AND SUPPORT

- ✓ We pay personalized attention and time in order to meet all your expectations.
- ✓ The products are developed and manufactured professionally and we respond in the shortest time.
- ✓ Our prices and services are competitive.
- ✓ Global Logistics



**Auto Commercial International
GTD FZCO**



INTERCOMS , P.A. AND SIRENS FOR CIVILLIAN VEHICLES



- Power out recommended for Civilian Cars: 25 watts
- ASD TECHNOLOGY (Automatic shutdown)
- Electronic auto-power off function to prevent Battery discharge, thus NO NEED to connect the equipment to accessories.
- Digital control keypad with backlight, ergonomic and discreet.
- 2 non-official siren tones.
- Monophonic Internal Sound.
- Compact, weather-resistant external speaker
- Hidden installation without modifying the original appearance of the car



NO NEED to open doors or windows to talk.



- Power out recommended for Trucks: 50 watts (Available outputs are 50/100/250/250).
- ASD TECHNOLOGY (Automatic shutdown)
- Electronic auto-power off function to prevent Battery discharge, thus NO NEED to connect the equipment to accessories.
- Backlit digital control keypad with integrated microphone.
- 2 non-official siren tones.
- Monophonic Internal Sound.
- Compact, weather-resistant external speaker
- Hidden installation without modifying the original appearance of the car



Multipurpose Buses Cargo Transport Trucks Trailers Coaches Lorries Midi Bus Matatus Vans Touring Security Cars

VOICE AMPLIFIERS (2WAY INTERCOMS, P.A SYSTEMS & SIRENS)



PW 150 Watts

- ❑ Power Output of 142 WATTS RMS.
- ❑ Luminescent digital control keypad.
- ❑ Automatic calibration of external volume. (VAA).
- ❑ AFC suppressor against annoying feedback noise.
- ❑ Intelligent Auto-Shutdown electronics to avoid battery drainage while idle. (ASD)
- ❑ Internal stereo sound speakers.
- ❑ 7 Official siren tones, 4 selectable



PW 100 Watts

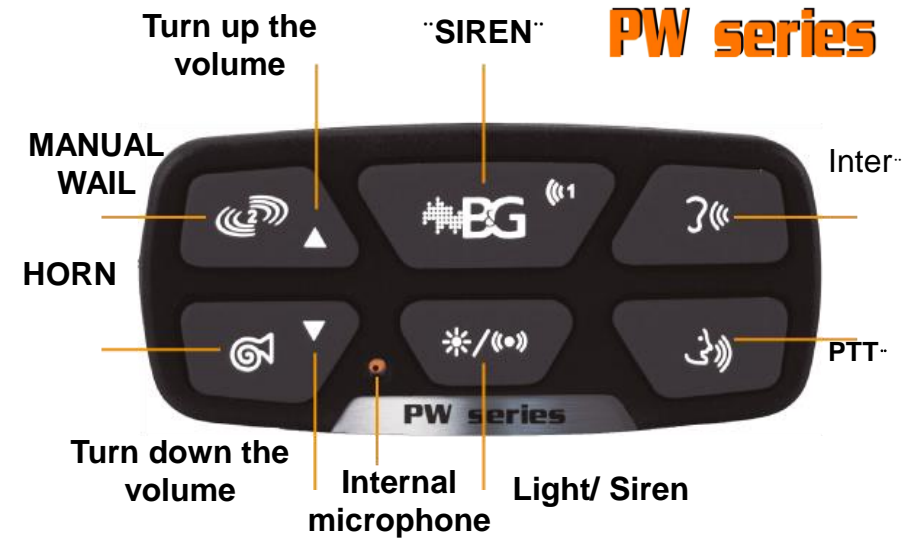
- ❑ Power Output of 100 WATTS RMS
- ❑ Luminescent digital control keypad.
- ❑ Internal monophonic sound speakers.
- ❑ Intelligent Auto-Shutdown electronics, avoid battery drainage while idle. (ASD)
- ❑ 6 Official siren tones, 4 selectable
- ❑ Auxiliary output to connect lights and operate them from the keyboard



PW 50 Watts

- ❑ Power Output of 46 WATTS RMS.
- ❑ Luminescent digital control keypad..
- ❑ Internal monophonic speakers.
- ❑ AFC suppressor against annoying feedback noise.
- ❑ Intelligent Auto-Shutdown electronics to avoid battery drainage while idle. (ASD).
- ❑ Intelligent Auto-Shutdown electronics to avoid battery drainage while idle. (ASD)
- ❑ 2 momentary HORN tones

INTERCOMS , P.A. AND SIRENS FOR ARMORED VEHICLES



Model PW-50/100/150/250

Luminescent digital control keypad :
discreet & easy to use

Intuitive & easy to use
Luminescent digital keypad , ergonomic & discreet.
 Protects against accidental battery discharge.
Intelligent electronic auto shutdown.
 Suppresses noise within the cabin.
ASD system eliminates feedback sounds.

Meets regulations in most countries.
Special models without sirens
 Does not change the external appearance of the vehicle.
Hidden microphones and equipment.
 Quick installation, ready for the road.
Automatic calibration of external volume & new compact external speaker.

Copyright © 2018 ACIGTD FZCO, All rights reserved

Hand held microphone



Small high gain microphone



AMBULANCE SOLUTIONS

1-way Communication between vehicle cabins

Luminescent function indicator on each panel.

Open door sound alarm.

Life status indicator.

Monitors voltage and amperage of auxiliary battery.

Designed for heavy duty.

Alphanumeric display indicating status information for modules and devices.

Displays the status of the auxiliary battery.

Automotive serial communication protocol (CAN BUS).

Monitors the temperature in the rear cabin.



- ✓ It keeps the driver in permanent contact with the passengers
- ✓ Ideal for optimizing communication in vehicles such as ambulances, limos and taxis.
- ✓ Power switch and volume control.
- ✓ Hands-free operation equipment.
- ✓ Hidden microphones for the rear cab of the vehicle.

CP System Series

VCP-TOUCH

Devices control panel for utilitarian vehicles
 applications: Ambulances, buses and police vehicles.

Specifications and Installation Diagram

Power module

Driver module



Product features

- Customizable menu screen, adaptable to the client's needs.
- Power management module with individual fuses for each device.
- Reports battery charge status.
- 7" touch screen.
- Heavy duty design.
- Real time information management.
- Vehicle serial communication protocol (CAN).
- Monitors voltage and amperage of the battery.
- Reports if there are burned fuses connected to the system.
- Recommended for police vehicles and buses.

Manufactured upon request.
 Harnesses to connect devices not included.

Technical Specifications

	Reference ▶	VCP-TOUCH
Power consumption	Maximum	400 mA (device's consumption not included)
	Stand-by mode	<25 mA
Input voltage	Maximum	14.9 VDC
	Minimum	10.5 VDC
	Driver module	7" touch screen (1)
	Power module	5 x 16 x 26 cm

ACP-TOUCH

Ambulance control panel



Product features

- Two 7" touch screens.
- Customizable menu screen, adaptable to the client's needs.
- Vehicle serial communication protocol (CAN).
- Power management module with individual fuses for each device.
- Patient's status notifications.
- Monitors voltage and amperage of the auxiliary battery.
- Reports battery charge status.
- Open doors sound alarm.
- Heavy duty design.
- Reports if there are burned fuses connected to the system.
- Real time information management.

Manufactured upon request.
 Harnesses to connect devices not included

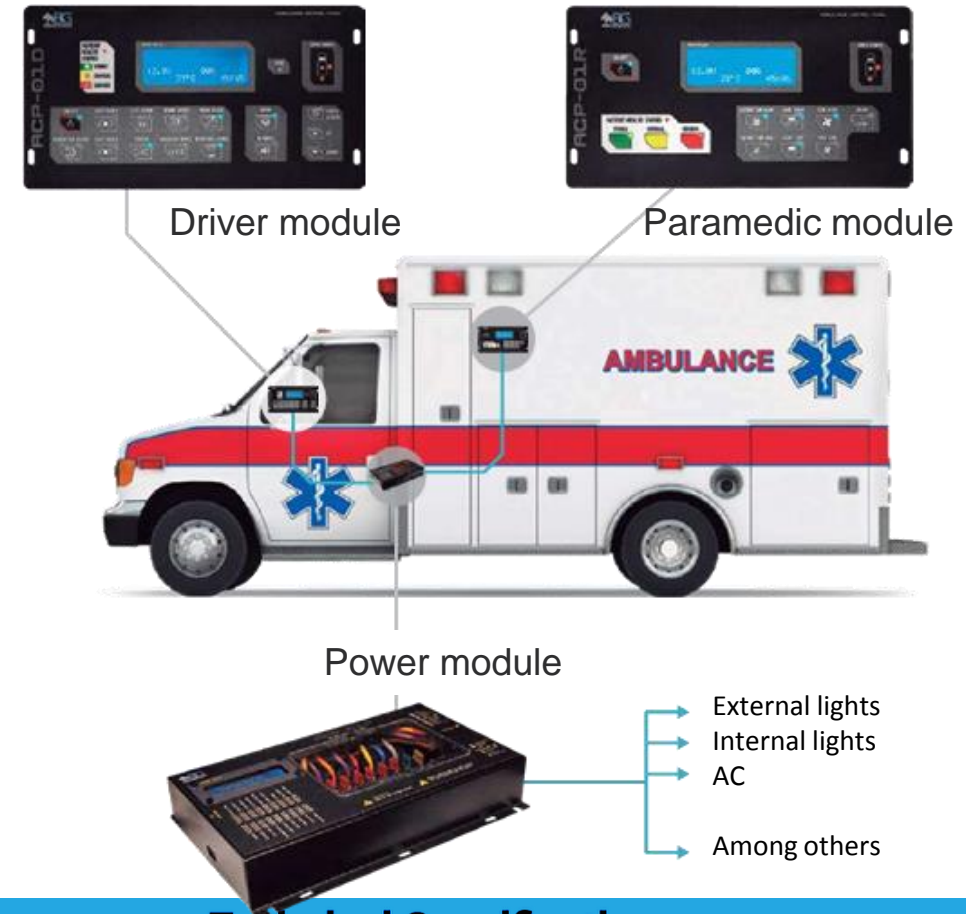


Technical specifications

Reference ►		ACP-TOUCH
Power consumption	Maximum	400 mA (device's consumption not included)
	Stand-by mode	<25 mA
Input voltage	Maximum	14.9 VDC
	Minimum	10.5 VDC
	Driver module	7" touch screen (1)
	Paramedic module	7" touch screen (1)
	Power module	5 x 16 x 26 cm

ACP-Lite

Ambulance control panel



Product features

- Membrane control panel with alphanumeric display that reports information regarding the module's status and the devices.
- Light indicators on each of the panel's functions.
- Reports if there are burned fuses connected to the system. Open doors sound alarm.
- Power management module with individual fuses for each device.
- Patient's status notifications.
- Monitors voltage and amperage of the auxiliary battery.
- Reports battery charge status.
- Vehicle serial communication protocol (CAN).
- Monitors temperature of the rear cabin.
- Heavy duty design.
- Real time information management.

Technical Specifications

Reference ▶		ACP-Lite
Power consumption	Maximum	400 mA (device's consumption not included)
	Stand-by mode	<62 mA
Input voltage	Maximum	14.9 VDC
	Minimum	10.5 VDC
	Driver module	Dimensions: 25 x 13 x 3 cm / Weight: 0.5 kg
	Paramedic module	Dimensions: 25 x 13 x 3 cm / Weight: 0.5 kg
	Power module	Dimensions: 26 x 16 x 5 cm / Weight: 1.2 kg

P.A. And Sirens For Official Motorcycles

Designed exclusively for installation on official motorcycles



Automatic color sequence.



Repels the attacker.
Warn other drivers on the road.
Clears a path on the road.

Waterproof controls



MTL -03F



- ✓ Lights controller designed in resistant materials, with weather proof, and uv ray resistant rubber protection for the switches.
- ✓ Rotating function of 5 sequences.
- ✓ Front lights with metal anchor.
- ✓ Tail light with rubber coupling for installation (1 or 2).
- ✓ Blue and red color.



- ✓ Output power of 50 WATTS.
- ✓ 6 official siren sounds (Horn, Wail, Phaser, Yelp, Hi-low, Manual).
- ✓ 2 switch control box designed in resistant materials, with weather proof, and uv ray resistant rubber protection for the switches.
- ✓ Weather resistant power horn.
- ✓ Anchors (lights and / or horn) for welding or screwing.
- ✓ Concealed installation module.
- ✓ Preserve battery mode.

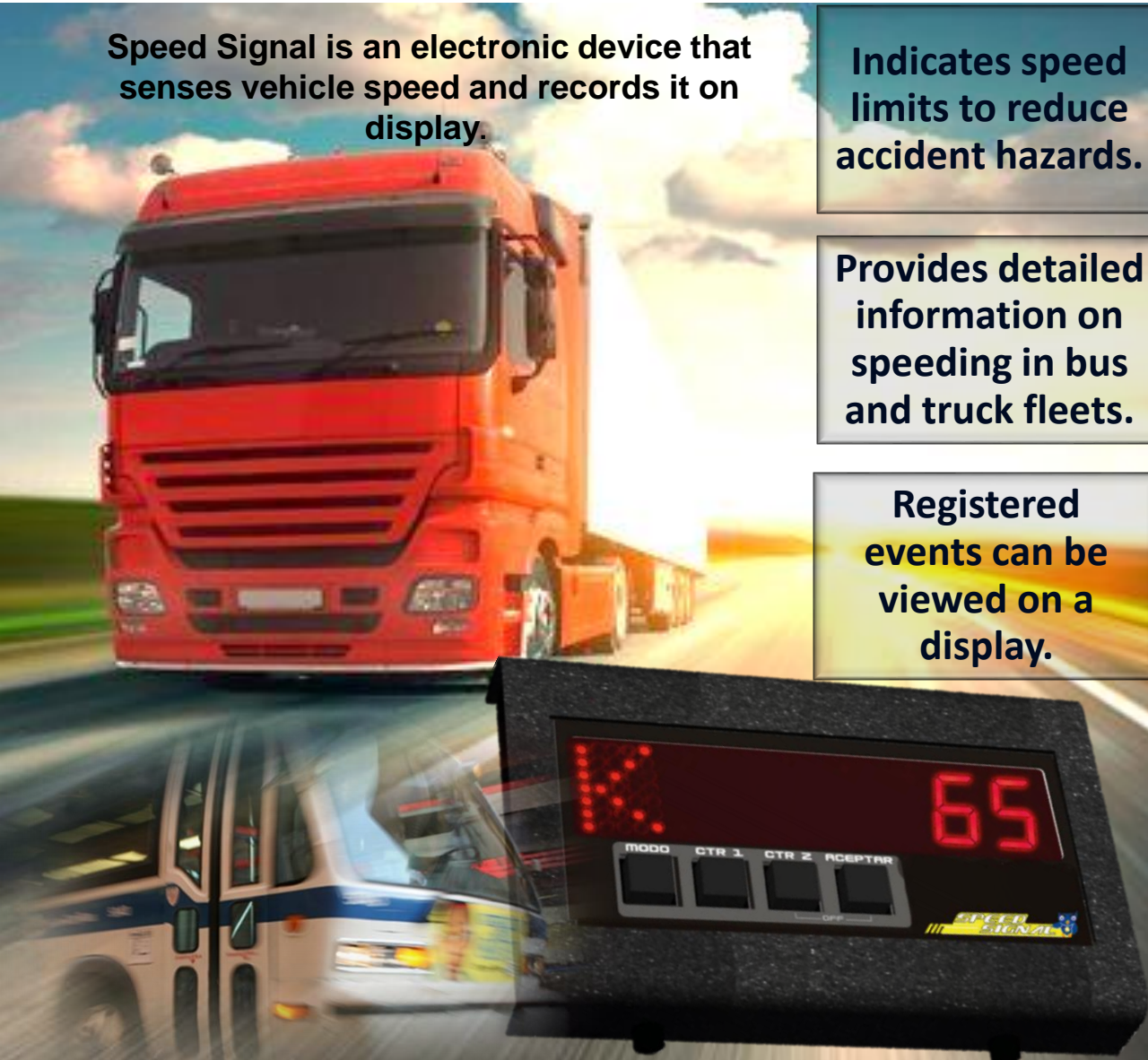
Speedometers

Speed Signal is an electronic device that senses vehicle speed and records it on display.

Indicates speed limits to reduce accident hazards.

Provides detailed information on speeding in bus and truck fleets.

Registered events can be viewed on a display.



Taximeters

An electronic device installed that calculates passenger fares based on a combination of distance travelled and waiting time



Copyright © 2018 ACIGTD FZCO, All rights reserved

Applications: Buses, Vans, Taxis, Trucks and Lift Trucks

Emergency Lights Series LED and stroboscopic light sets

Traffic Lamp



- Third generation two-color LED lights.
- Exterior weatherproof use.
- Automatic settings with B&G sirens.
- Adjustable position, mobile base.
- Easy location in small spaces.
- Two-color lamp, the color setting is determined on request (Blue-Red).
- High gloss and durability.
- 600 Fps. (Flashes Per Minute) maximum.

Traffic Lamp A-S



- Dual purpose light
- Function 1: Explorer.
- Function 2: Signaling (flashing).
- Third generation LED white lights.
- Outdoor weatherproof.
- Automatic settings with B & G sirens.
- Adjustable position, mobile base.
- Easy location in small spaces.
- Low battery consumption.
- White lamp.
- 600 Fps. (Flashes Per Minute) maximum.

STROBE LIGHTS



- 60 watts Strobe lights.
- 9 Sequences.
- High brightness and fast flashes.
- 27 selectable flash panels
- 4 Strobe bulbs and connecting cables.

Emergency Lights



- Third generation white or two-color LED lights. Indoor use.
- Connection to cigarette lighter or auxiliary output 12V.
- Power control with sequences change.
- Includes cable extension for installation on the rear glass.
- Adjustable position, Mobile base.
- Easy installation as it adheres to the glass by means of rubber suction cups.
- 600 Fps. (Flashes Per Minute) maximum.
- High gloss and durability.
- Low battery consumption
- 12 LEDs.
- Color blue red- white red, color settings are determined upon request.

Architectural solutions

No physical contact

Effective Public relations

Efficient Communication

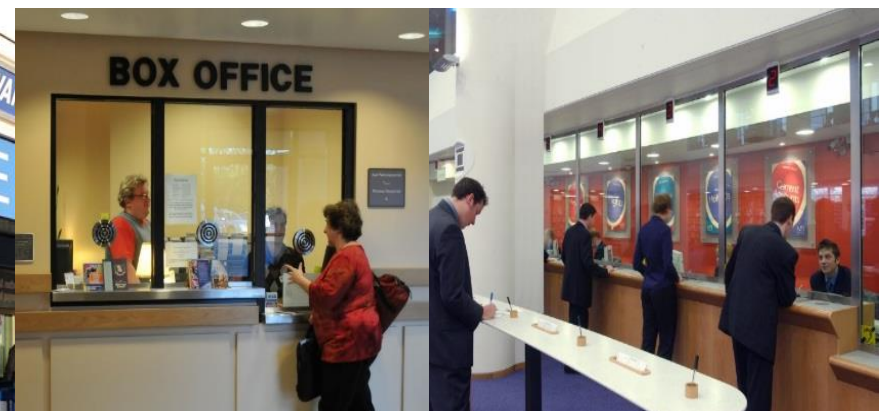
Eminent

3.5 WATTS power in internal and external speakers.

Harmonic distortion (THD) less than 1%.

High gain internal microphone (goose neck) that allows you to speak at a distance of 10 cm.

RJ9 connector for optional use with headset.



Sound alarm for emergency.

Possibility of connection with digital audio recording system (D . A . R .) .

Designed for mounting of external speaker in glass without perforation and internal unit of desktop.

External and internal volume control.



Designed for areas with low ambient noise, such as offices, projecting an excellent corporate image thanks to its elegant presentation with aluminum and steel finishes. Easy to install as it does not require drilling in the glass.

Digital processor for intelligent audio control giving a frequency response for voice intelligibility.

Mute function.

Includes aluminum cable gland (30 cms). Sensitivity calibration of the internal microphone in 3 phases.

Automatic shut down function (after 30 seconds of idleness, the intercom automatically lowers the volume by avoiding external noise).

Manual function for more privacy, allowing communication by pressing the PTT (mute) function.



EXTERNAL SPEAKER UNIT AND EXTERNAL MICROPHONE

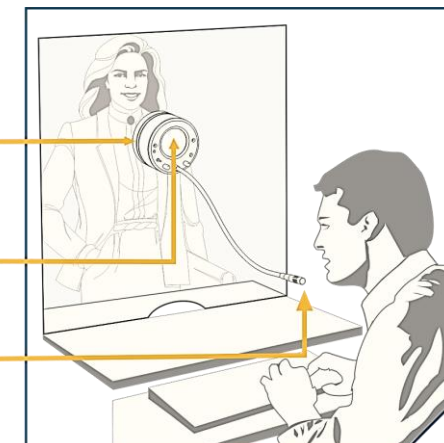
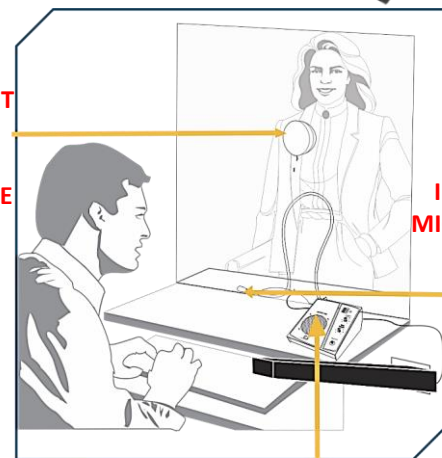
INTERNAL MICROPHONE

INTERNAL SPEAKER UNIT

EXTERNAL SPEAKER UNIT AND EXTERNAL MICROPHONE

INTERNAL SPEAKER UNIT

INTERNAL MICROPHONE



Bullet Resistance Glass

High Performance Transparent Armour



arat Security Group

PROTECTION
SECURITY



AUTOMOTIVE APPLICATIONS



ARCHITECTURAL APPLICATIONS



MILITARY APPLICATIONS



PROTECTION LEVEL

Transparent armor is tested to meet a variety of threat levels from the National Institute of Justice (NIJ) Level IIA to the European CEN 1063 B7 (UL10) level of protection in both flat and curved glass, including .50 caliber ballistic protection. Custom threat level configurations are also available for a wide range of applications.

Copyright © 2018 ACIGTD FZCO, All rights reserved

Products and Technology



Centigon Glass

A Centigon Security Group Company

Steel Frame

- Bulletproof glass where the glass offset is replaced by a steel framework.
- Generally this product is requested by the military, where the care of the vehicles is low.
- This type of frame prevents broken glass offset caused by closing the car door too hard with the window down

Scratch Shield

- Bulletproof glass with translucent glass materials.
- High tech polymers.
- Excellent optical properties.
- In compliance with NATO requirements.
- The inside has high quality polycarbonate, which allows the glass have greater internal resistance against scratches generated in the installation process.

Various Color - Currently we have the ranges of colors that the market demands

Color	Description
Clear	No Tint
Light Gray	Soft Gray
Medium Gray	Medium Gray
Dark Gray	Strong Gray

Steel Insert

Bullet proof glass for ballistic resistance of less than .44 magnum ammunition. Offset made of glass & 2mm of ballistic steel

Architecture

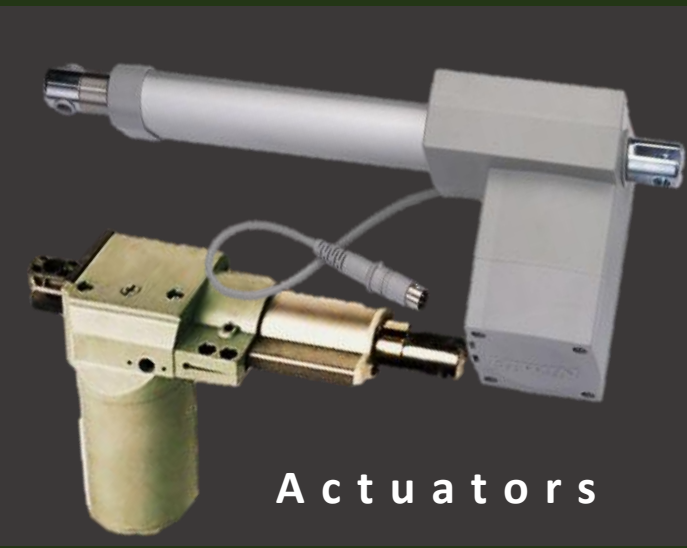
Flat armored glass and optical ballistic characteristics identical to those used in the automotive sector, also used for military units and trucks.

Armoured Vehicle Parts & Accessories

Gun ports



Actuators



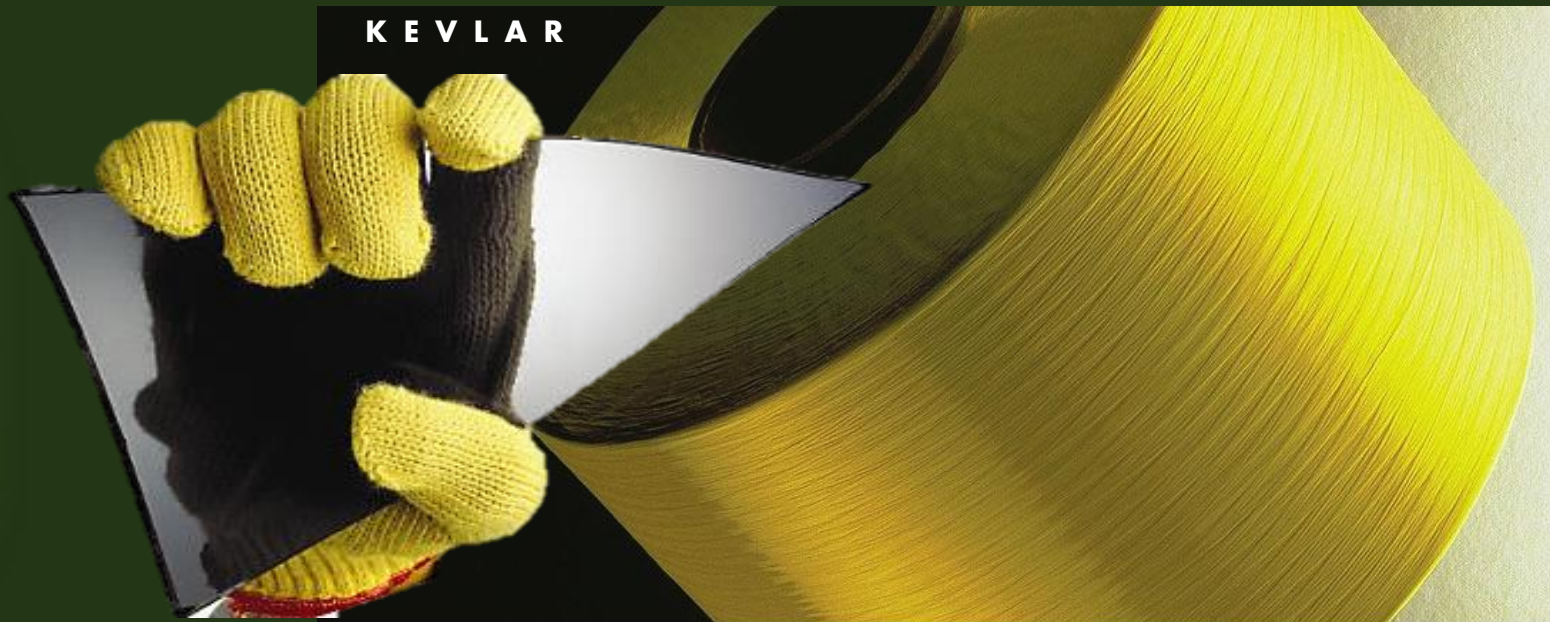
Gas Springs



Heavy Duty Door Hinges

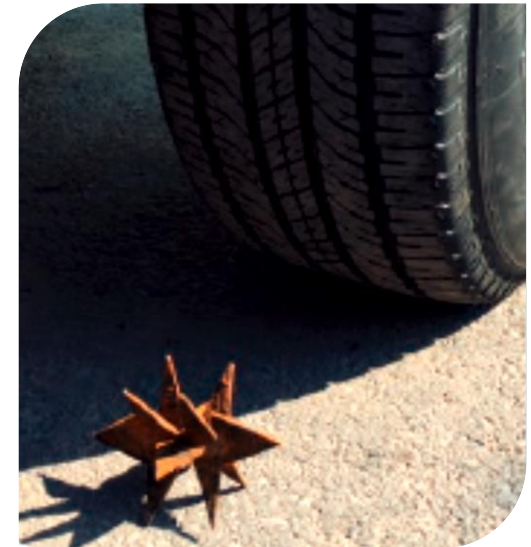


KEVLAR



HD RUNFLATS

Run flats,
under specific designs, to meet
the needs of speed and special
loads, as well as ballistic
resistances for all levels of
shielding & protection



Our solutions seek to keep vehicles moving, protecting one of the most exposed components of any vehicle, but essential for the movement of the unit ... The Tires

AUTOMOTIVE SPARE PARTS AND ACCESSORIES.

Genuine

Used

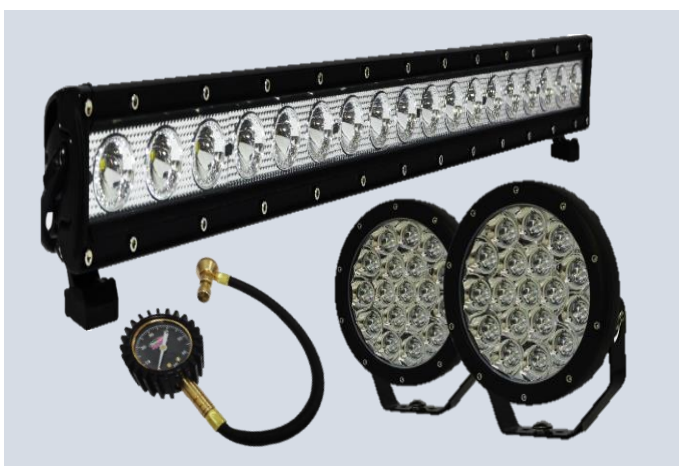
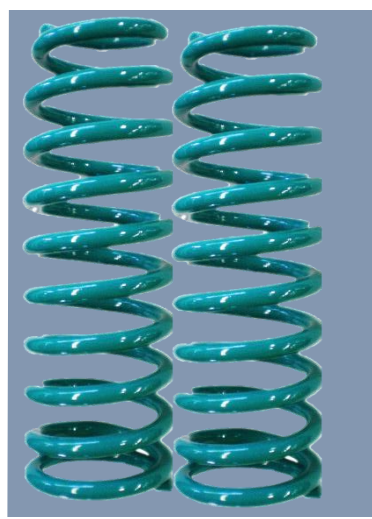
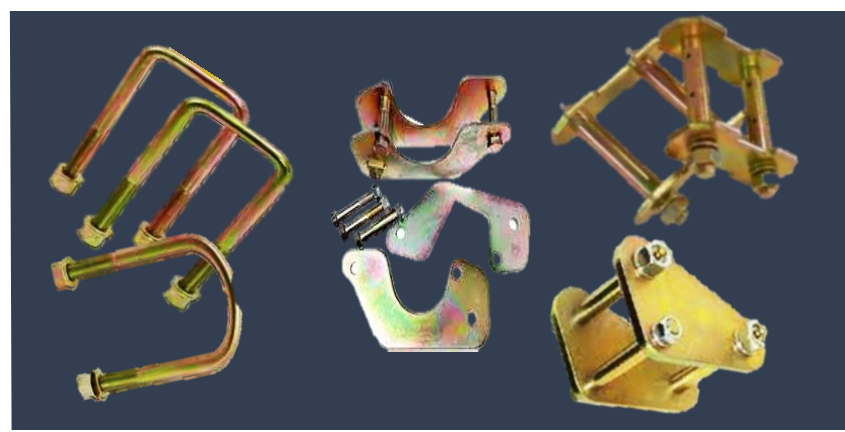
After Market



wide range of 4x4 parts

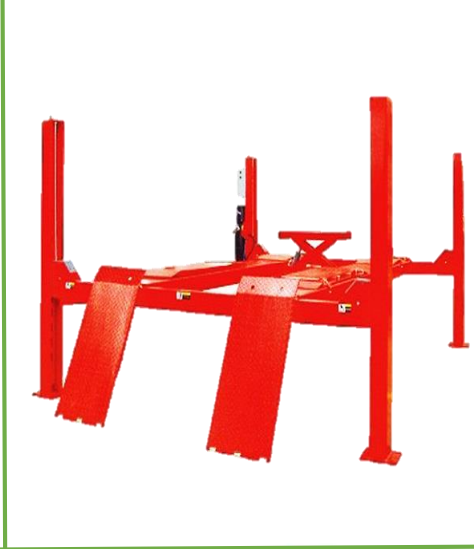


- Bull bars &
- Roof Racks.
- Snorkels.
- Air Compressors.
- Driving lights
- Dual battery kits.
- First aid kits,
- Fridge/Freezer .
- Recovery gear.
- Lifting Jacks .
- Winches.
- Tyre Accessories.
- Coil Spacers.
- Coil & leaf springs
- Camping &
- Touring Equip.





- Calibration frames.
- Ergonomic clamps.
- Turntables.
- Quick clamps.
- Wheel hug clamps.
- Round adaptors.
- Wheel stands.



- ✓ Wheel Aligners.
- ✓ Auto Transmission Cleaners
- ✓ Injectors Cleaner & Tester.
- ✓ 2 Post Hoists.
- ✓ 4 Post Lifts.
- ✓ Scissor Lifts.
- ✓ Tool trolley sets.





Affiliated with WCA and ecommerce with 6,476 members in 190 countries, 787 cities and ports worldwide

We notify our clients of current competitive freight rates, priority and scheduled services, as well as full assistance on logistics

Cost effective solutions for all types of cargo

- General Cargo
- DGR / Radio Active
- Military Cargo
- Armored Vehicles
- Out sized Cargo
- Project cargo
- Trans shipment Cargo
- Perishables
- Emergency relief
- Consolidation



Logistic Services

- ✓ Documentation and customs clearance
- ✓ In-house QA and QC
- ✓ 3 PL services
- ✓ Door-to-door delivery services
- ✓ Temperature controlled storage
- ✓ Paperless Logistic support via web-based technology
- ✓ Expert in project handling / Out of gauge cargo handling
- ✓ Barcoding / Track by serial number, lot number and/or expiration date
- ✓ Multi country consolidation cargo handling
- ✓ 24/7 dedicated operations experts
- ✓ Transit facilities

