



Auto Commercial International

GTD FZCO

Dubai – United Arab Emirates



Trucks & Trailers , Matatus , Coaches, Buses, Tourist Builds, Vans, Solutions



INTERCOMS , P.A. AND SIRENS FOR CIVILLIAN VEHICLES



- Power out recommended for Civilian Cars: 25 watts
- ASD TECHNOLOGY (Automatic shutdown)
- Electronic auto-power off function to prevent Battery discharge, thus NO NEED to connect the equipment to accessories.
- Digital control keypad with backlight, ergonomic and discreet.
- 2 non-official siren tones.
- Monophonic Internal Sound.
- Compact, weather-resistant external speaker
- Hidden installation without modifying the original appearance of the car



NO NEED to open doors or windows to talk.



- Power out recommended for Trucks: 50 watts (Available outputs are 50/100/250/250).
- ASD TECHNOLOGY (Automatic shutdown)
- Electronic auto-power off function to prevent Battery discharge, thus NO NEED to connect the equipment to accessories.
- Backlit digital control keypad with integrated microphone.
- 2 non-official siren tones.
- Monophonic Internal Sound.
- Compact, weather-resistant external speaker
- Hidden installation without modifying the original appearance of the car



Multipurpose Buses Cargo Transport Trucks Trailers Coaches Lorries Midi Bus Matatus Vans Touring Security Cars

VOICE AMPLIFIERS (2WAY INTERCOMS, P.A SYSTEMS & SIRENS)



PW 150 Watts

- Power Output of 142 WATTS RMS.
- Luminescent digital control keypad.
- Automatic calibration of external volume. (VAA).
- AFC suppressor against annoying feedback noise.
- Intelligent Auto-Shutdown electronics to avoid battery drainage while idle. (ASD)
- Internal stereo sound speakers.
- 7 Official siren tones, 4 selectable



PW 100 Watts

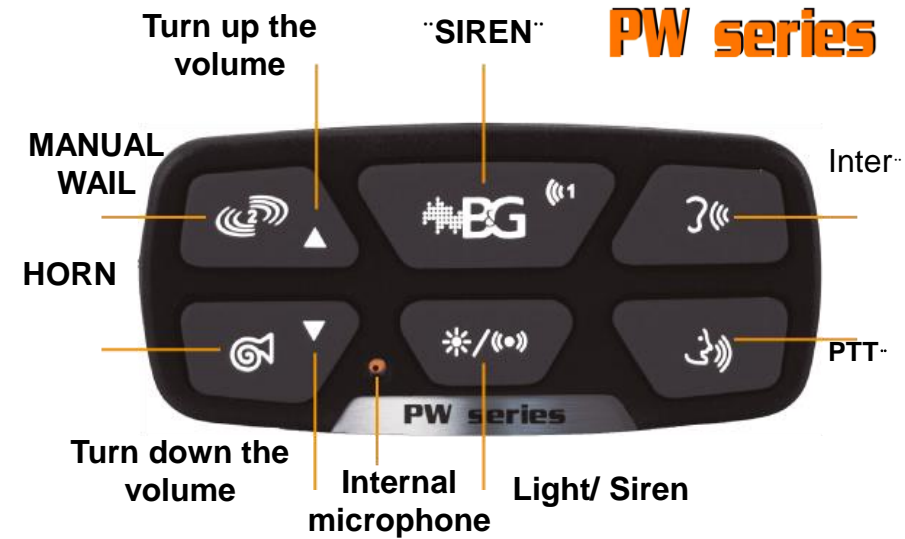
- Power Output of 100 WATTS RMS
- Luminescent digital control keypad.
- Internal monophonic sound speakers.
- Intelligent Auto-Shutdown electronics, avoid battery drainage while idle. (ASD)
- 6 Official siren tones, 4 selectable
- Auxiliary output to connect lights and operate them from the keyboard



PW 50 Watts

- Power Output of 46 WATTS RMS.
- Luminescent digital control keypad..
- Internal monophonic speakers.
- AFC suppressor against annoying feedback noise.
- Intelligent Auto-Shutdown electronics to avoid battery drainage while idle. (ASD).
- Intelligent Auto-Shutdown electronics to avoid battery drainage while idle. (ASD)
- 2 momentary HORN tones

INTERCOMS , P.A. AND SIRENS FOR ARMORED VEHICLES



Model PW-50/100/150/250

Luminescent digital control keypad :
discreet & easy to use

Intuitive & easy to use
Luminescent digital keypad , ergonomic & discreet.
 Protects against accidental battery discharge.
Intelligent electronic auto shutdown.
 Suppresses noise within the cabin.
ASD system eliminates feedback sounds.

Meets regulations in most countries.
Special models without sirens
 Does not change the external appearance of the vehicle.
Hidden microphones and equipment.
 Quick installation, ready for the road.
Automatic calibration of external volume & new compact external speaker.

Copyright © 2018 ACIGTD FZCO, All rights reserved

Hand held microphone



Small high gain microphone



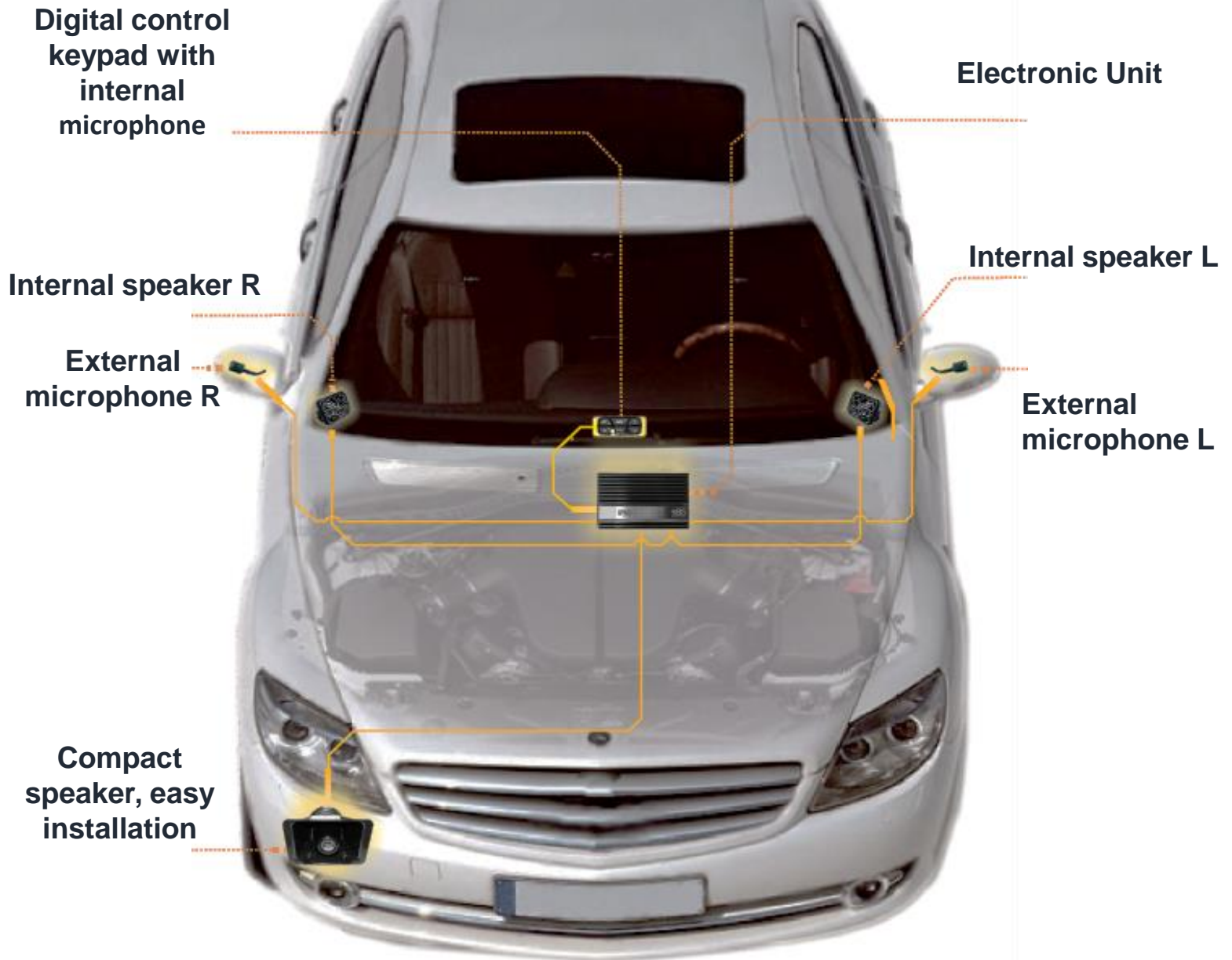


**Add 2-3 More DB
with our optional
diffuser.**



**Optional
Encapsulated microphone.**

**The PAW Series was created to simplify
usability and equipment installation, ideal
for undercover security vehicles and
unmarked police cars.**



CP System Series

VCP-TOUCH

Devices control panel for utilitarian vehicles
 applications: Ambulances, buses and police vehicles.

Specifications and Installation Diagram

Power module

Driver module



Product features

- Customizable menu screen, adaptable to the client's needs.
- Power management module with individual fuses for each device.
- Reports battery charge status.
- 7" touch screen.
- Heavy duty design.
- Real time information management.
- Vehicle serial communication protocol (CAN).
- Monitors voltage and amperage of the battery.
- Reports if there are burned fuses connected to the system.
- Recommended for police vehicles and buses.

Manufactured upon request.
 Harnesses to connect devices not included.

Technical Specifications

	Reference ▶	VCP-TOUCH
Power consumption	Maximum	400 mA (device's consumption not included)
	Stand-by mode	<25 mA
Input voltage	Maximum	14.9 VDC
	Minimum	10.5 VDC
	Driver module	7" touch screen (1)
	Power module	5 x 16 x 26 cm

VCI-02

Two way communication

between the vehicle's cabins.

cabin intercoms for emergency and security vehicles



VCI-02 makes basic communication simple between the driver's cabin and rear cabin, without interfering with the critical ongoing activity.

The ergonomic design puts all controls in a single location to simplify the work flow allowing people to concentrate on their job.

UTP Connectivity, fast installation using standard simple wiring, high fidelity communication without interference.



Permanent Communication between vehicle cabins , allowing officials to take right actions in emergency situations

An electronic module with speaker & microphone per cabin.

Each cabin has its own volume control.

Two operations modes.

VEHICLE INTERCOMMS BETWEEN CABINS FOR PASSENGER TRANSPORT VEHICLES



- ✓ VCI-01 makes basic communication straight forward between the driver's cabin and passenger's cabin. This increases the safety and the comfort for all.
- ✓ Keeps the driver in touch with the users or passengers.
- ✓ Does not alter the vehicles internal appearance, showing only the minimum elements for operation.
- ✓ Ideal for reinforcing security on vehicles such as taxis and limos.

ADVANTAGES

- ✓ Electronic module and front speaker are easy to mount and conceal.
- ✓ The driver has a hands-free, high-gain electric microphone that is easily hidden.
- ✓ Passenger speaker comes with built-in microphone and "Push To Call (PTC)" button to initiate conversation with the driver.

Emergency Lights Series LED and stroboscopic light sets

Traffic Lamp



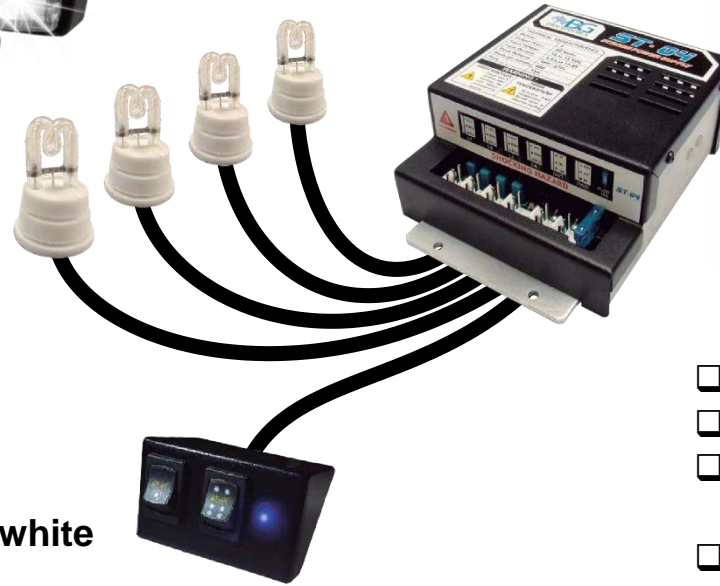
- Third generation two-color LED lights.
- Exterior weatherproof use.
- Automatic settings with B&G sirens.
- Adjustable position, mobile base.
- Easy location in small spaces.
- Two-color lamp, the color setting is determined on request (Blue-Red).
- High gloss and durability.
- 600 Fps. (Flashes Per Minute) maximum.

Traffic Lamp A-S



- Dual purpose light
- Function 1: Explorer.
- Function 2: Signaling (flashing).
- Third generation LED white lights.
- Outdoor weatherproof.
- Automatic settings with B & G sirens.
- Adjustable position, mobile base.
- Easy location in small spaces.
- Low battery consumption.
- White lamp.
- 600 Fps. (Flashes Per Minute) maximum.

STROBE LIGHTS



- 60 watts Strobe lights.
- 9 Sequences.
- High brightness and fast flashes.
- 27 selectable flash panels
- 4 Strobe bulbs and connecting cables.

Emergency Lights



- Third generation white or two-color LED lights. Indoor use.
- Connection to cigarette lighter or auxiliary output 12V.
- Power control with sequences change.
- Includes cable extension for installation on the rear glass.
- Adjustable position, Mobile base.
- Easy installation as it adheres to the glass by means of rubber suction cups.
- 600 Fps. (Flashes Per Minute) maximum.
- High gloss and durability.
- Low battery consumption
- 12 LEDs.
- Color blue red- white red, color settings are determined upon request.

SPEEDOMETERS

Speed Signal is an electronic device that senses vehicle speed and records it on display.



Indicates speed limits to reduce accident hazards.

Provides detailed information on speeding in bus and truck fleets.

Registered events can be viewed on a display.

Speed Signal is an electronic device that senses vehicle speed and records it on display. In compliance of all the Ministry of Transport requirements, in which, all public and scholar transport companies must install a device to control the driver's speed and also the transportation company

Bullet Resistance Glass

Luxury Armoured Coaches
Cash in Transit vehicles/ Trucks
Civilian vehicles
Security and Defence
Bespoke vehicles
Midi buses
Mini vans
Special purpose vehicles etc..



The development of transparent armor requires the mastery of both modern technology and the singular craftsmanship required to produce optically superior, certified glass that exceeds requirements for protection and clarity.



Certified & tested



Extended warranties



Whether you are looking for personal protection against simple street crime, or an advanced suit for sophisticated attacks, we provides tailored solutions to meets your needs.





The ability to identify, resist and move to respond to any attack can mean the difference between survival or destruction. In all scenarios **ATTACKS** The tires are the first targets . It is therefore essential for the driver to be able to move even with all the damaged tires.



Better protection to the Wheel & Tire



High Fracture Resistance



Lowers Temperature Through friction



Better Control & Stability



Lower Vibration



lighter



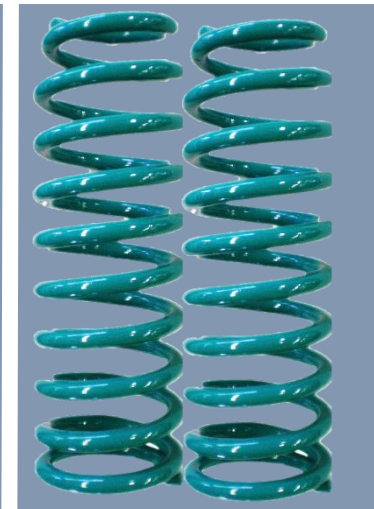
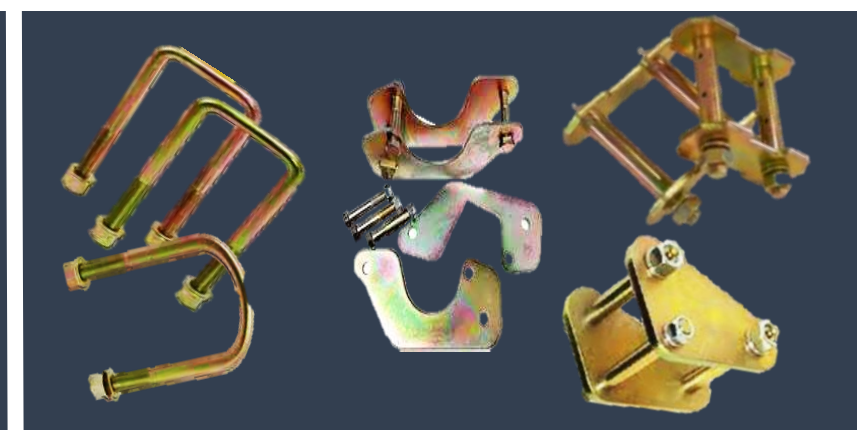
Higher Impact Resistance

Developed for High Performance ALL VEHICLE applications. Mainly used in Tactical vehicles , Troops, Transportation Vehicles or Armoured Trucks that cannot afford to loose their Mobility

Huge range of parts



- Bull bars &
- Roof Racks.
- Snorkels.
- Air Compressors.
- Driving lights
- Dual battery kits.
- First aid kits,
- Fridge/Freezer .
- Recovery gear.
- Lifting Jacks .
- Winches.
- Tyre Accessories.
- Coil Spacers.
- Coil & leaf springs
- Camping &
- Touring Equip.





Affiliated with WCA and ecommerce with 6,476 members in 190 countries, 787 cities and ports worldwide

We notify our clients of current competitive freight rates, priority and scheduled services, as well as full assistance on logistics

Cost effective solutions for all types of cargo

- General Cargo
- DGR / Radio Active
- Military Cargo
- Armored Vehicles
- Out sized Cargo
- Project cargo
- Trans shipment Cargo
- Perishables
- Emergency relief
- Consolidation



Logistic Services

- ✓ Documentation and customs clearance
- ✓ In-house QA and QC
- ✓ 3 PL services
- ✓ Door-to-door delivery services
- ✓ Temperature controlled storage
- ✓ Paperless Logistic support via web-based technology
- ✓ Expert in project handling / Out of gauge cargo handling
- ✓ Barcoding / Track by serial number, lot number and/or expiration date
- ✓ Multi country consolidation cargo handling
- ✓ 24/7 dedicated operations experts
- ✓ Transit facilities



Automotive Spare Parts & Accessories

- Genuine OEM
- After Market
- 4x4 Vehicles
- Civilian Vehicles

Armoured Vehicle Components

- Intercoms & Electronics
- Bullet Resistance Glass
- Run Flats
- Mobility Solutions
- High Performance Materials
- Accessories

Architectural solutions

- Intercoms & Electronics
- High Performance Glass

Logistic Solutions

SERVICE AND SUPPORT

- ✓ We pay personalized attention and time in order to meet all your expectations.
- ✓ The products are developed and manufactured professionally and we respond in the shortest time.
- ✓ Our prices and services are competitive.
- ✓ Global Logistics



**Auto Commercial International
GTD FZCO**

